

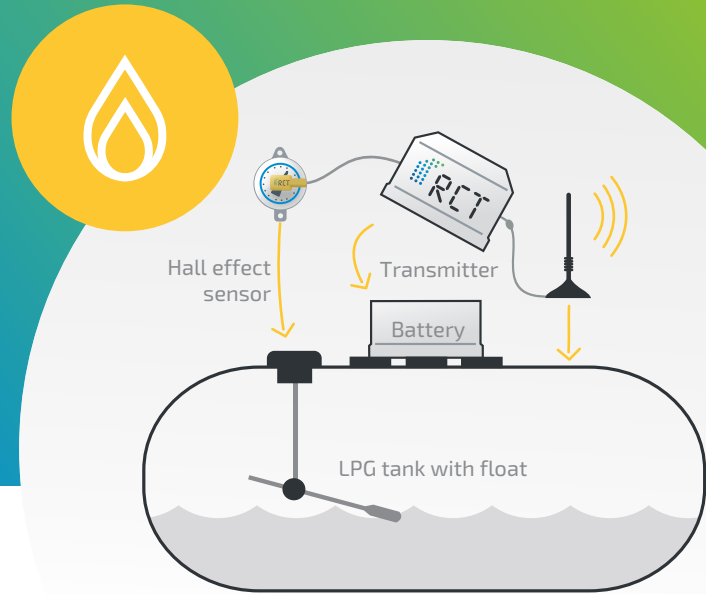
## Sensors for gas tanks + adapters

Hall effect sensors + adapters for connection to LEVELview.BASIC/PRO | Ex zone 1



### Your benefits

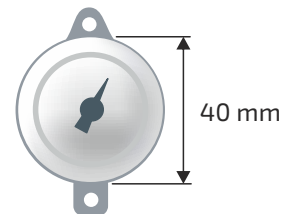
- Non-contact level measurement through Hall effect sensors (magnetic field)
- Connection to LEVELview transmitter units for remote monitoring of gas tank levels locally by radio or globally via Web & Mobile App
- Easy connection to transmitter units via cable and plug or permanently connected
- Easy retrofitting to existing systems



### Sensor type RCT Junior (Signal generator RCT Rochester compatible) - 1000034



- RCT Standard sensor
- compatible with level gauges [type Rochester junior](#) and [SRG 487](#)
- combinable with all RCT adapters
- accuracy: +/- 2%
- temperature range: -20°C to +60°C
- operating voltage: 5 V DC
- connection cable: 3 x 0.25 mm<sup>2</sup>,
- length 1.5 m, screw connection

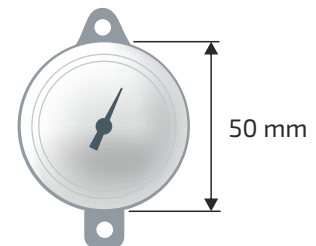


*Dimensions of original displays Rochester junior and SRG Standard/487 for comparison*

### Adapter type Junior to Rochester senior - 1000438



for use of the standard sensor type RCT Junior on level sensor [type Rochester senior](#)



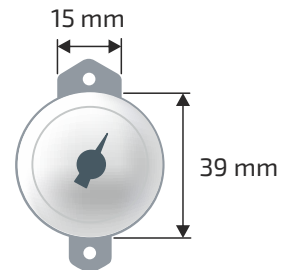
*Dimensions of original display Rochester senior for comparison*



## Adapter type Junior to SRG 705 - 1001032



- for use of the standard sensor type RCT Junior on level sensor [type SRG 705](#) (manufactured by SRG until 1993)
- using the adapter, the RCT Junior sensor is installed rotated by approx. 15 %



*Dimensions of original display SRG 705 for comparison*



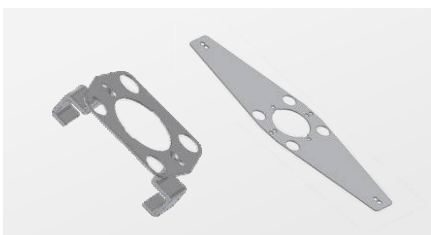
## Original Rochester Sensors



LEVELview transmitter units are available with the following [original Rochester sensors](#)

- |                         |   |
|-------------------------|---|
| <a href="#">1000028</a> | Sensor Original Rochester 4"              |
| <a href="#">1000031</a> | Sensor Original Rochester 8" Centerline   |
| <a href="#">1000032</a> | Sensor Original Rochester 8" Straddleline |

## Further adapters



for use of the standard sensor type RCT Junior on level transmitter [type Rochester Taylor 4" or 8"](#)

- |                         |                                  |
|-------------------------|----------------------------------|
| <a href="#">1000541</a> | Adapter type Junior to Taylor 4" |
| <a href="#">1000544</a> | Adapter type Junior to Taylor 8" |

## Other customer-specific sensors



other customer-specific sensors are available on request, e.g. with scales for [Livello](#) or [Cotrako](#)

- |                         |                            |
|-------------------------|----------------------------|
| <a href="#">1000038</a> | Sensor type Livello        |
| <a href="#">1000043</a> | Sensor type Cotrako/linear |